



### PRODUCT OVERVIEW

The HDZ series offers emergency and exit illumination that is designed to perform in hazardous environments. The HDZ series is approved for installation in NEC Class I, Divisions 1 or 2, Groups C & D; or Class II, Divisions 1 or 2, Groups E, F and G areas. The HDZ series uses copper-free cast aluminum housings that offer trouble-free installation and durability.

### EXTERNAL SPECIFICATIONS

The HDZ series housings are constructed from corrosion resistant, copper-free cast aluminum. The quick access thread on cover allows for trouble-free installation and reduces general maintenance time. A one-way stainless breather provides proper and effective unit ventilation. Internal test switch and monitor LED are standard. The HDZ series is capable of supporting remote emergency fixtures and exit signage.

### INTERNAL SPECIFICATIONS

The HDZ series is configured with universal 120/277 VAC input with solid state charging circuitry. Standard features include low voltage disconnect, AC lockout and brownout protection.

### INSTALLATION

The HDZ luminaire is suitable for surface wall or ceiling and pendant mounting. Suitable for installation and operation in NEC Class I, Div 1 or 2, Groups C & D; or Class II, Div 1 or 2, Groups E, F & G areas.

### LAMP SELECTION

- 6V halogen: 8WH, 10WH, 12WH, 20WH
- 12V halogen: 8WH, 12WH, 20WH
- 24V halogen: 12WH, 20WH
- 120V compact: (CF) compact fluorescent: 2 x 13W

### ORDERING INFORMATION

Series	Operation	Capacity	Class	Div.	Groups	Light/EXIT	#of Lamps	Mounting	Options
HDZ	6 (volt DC)	26 (120V CF)	C1 (i)	D1 (i)	B	0 (none)	1 (single lamp)	CM (ceiling mount)	AT (auto-test)
	12 (volt DC)	36 (6V, 12V)	C2 (ii)	D2 (ii)	C	L1 (single head)	2 (double lamp)	PM (pendant mount)	RF (reflector hood)
	24 (volt DC)	54 (6V, 12V)			D	L2 (double head)	Note: see lamp guide	WM (wall mount)	WG (wireguard)
		100 (6V, 12V)			E	X1 (single face exit)			GL (green lens)
					F	X2 (double face exit)			TD (Time delay)
					G				NC (nicad battery)

### HDZ BUILDER

Series	Operation	Capacity	Light/EXIT	#of Lamps	Mounting	Options

EXAMPLE: HDZ-6-36-C1-D1-CD-L1-X1-2-CM-TD(277)  
 DESCRIPTION: HDZ emergency luminaire 6V36W class1, division1, groups C & D, single head, double lamp, single face exit, time delay (277V)

<b>JOB:</b>	<b>TYPE:</b>
-------------	--------------

**MECHANICAL SPECIFICATIONS**

The **HDZ** series is constructed from corrosion resistant, copper free aluminum. The quick access thread-on cover allows for trouble-free installation and maintenance. The **HDZ** series incorporates a one way stainless steel breather that provides proper unit ventilation. External test switch and monitor LED are standard.

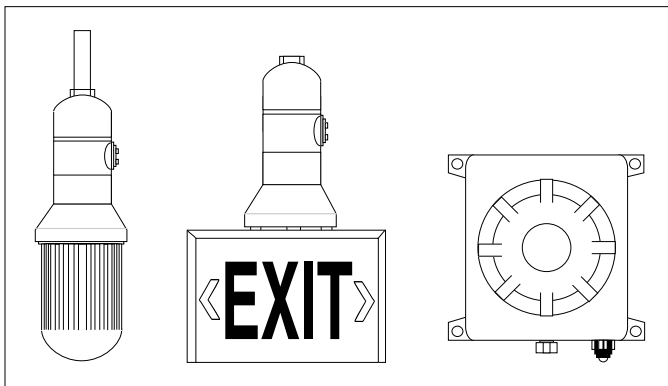
**CHARGER SPECIFICATIONS**

The **HDZ** series utilizes a pulse switching charger that is up to 70% more efficient than traditional constant voltage chargers. The charger is a fully automatic current limited charger with solid state line-latched low voltage disconnect protection. All components used in the circuitry are temperature compensated. The charger also has brownout and short circuit protection. An external push button test switch allows maintenance personnel to quickly determine the operational status of the unit and lamp load.

**CONFIGURATIONS**

The **HDZ** series utilizes a pulse switching charger that is up to 70% more efficient than traditional constant voltage chargers. The charger is a fully automatic current limited charger with solid state line-latched low voltage disconnect protection. All components used in the circuitry are temperature compensated. The charger also has brownout and short circuit protection. An external push button test switch allows maintenance personnel to quickly determine the operational status of the unit and lamp load.

**DIMENSIONS (in.)**



Wattage	A"	B"	C"
36W-100W	Please consult factory for dimensions		
2x13W	Please consult factory for dimensions		
L1, L2, L3	Please consult factory for dimensions		
X1, X2	Please consult factory for dimensions		

**BATTERY TECHNOLOGY**

The **HDZ** series is designed to be used with maintenance free, sealed valve regulated lead acid batteries that provide a minimum emergency duration of 90 minutes. Recharge time of the battery is twenty-four (24) hours. Other batteries including Nickel-Cadmium are available, please contact Beghelli Customer Service for additional information.

**MODEL RATING GUIDE**

Model	Voltage	Wattage				Cabinet
		90min	120min	180min	240min	
HDZ-6-36	6	36	24	18	12	A
HDZ-6-54	6	54	36	27	18	A
HDZ-6-100	6	100	72	54	36	A
HDZ-12-36	12	36	27	18	12	A
HDZ-12-54	12	56	36	24	18	A
HDZ-12-100	12	100	72	54	36	A

**WARRANTY**

The **HDZ** Series comes with a 5-year factory warranty. Lamps are not covered under the warranty. Deliberate damage, misuse, improper installation effectively cancel the warranty.



### PRODUCT OVERVIEW

The HDZ series offers emergency and EXIT illumination that is designed to perform in hazardous environments. The HDZ series is approved for installation in NEC Class I, Divisions 1 or 2, Groups C & D; or Class II, Divisions 1 or 2, Groups E, F and G areas. The HDZ series uses copper-free cast aluminum housings that offer trouble-free installation and durability.

### EXTERNAL SPECIFICATIONS

The HDZ series housings are constructed from corrosion resistant, copper-free cast aluminum. The quick access thread on cover allows for trouble-free installation and reduces general maintenance time. A one-way stainless breather provides proper and effective unit ventilation. External test switch and monitor LED are standard. The HDZ series is capable of supporting remote emergency fixtures and exit signage.

### INTERNAL SPECIFICATIONS

The HDZ series is configured with universal 120/277 VAC input with solid state charging circuitry. Standard features include low voltage disconnect, AC lockout and brownout protection.

### INSTALLATION

The HDZ luminaire is suitable for surface wall or ceiling and pendant mounting. Suitable for installation and operation in NEC Class I, Div 1 or 2, Groups C & D; or Class II, Div 1 or 2, Groups E, F & G areas.

### LAMP SELECTION

- 6V halogen: 8WH, 10WH, 12WH, 20WH
- 12V halogen: 8WH, 12WH, 20WH
- 24V halogen: 12WH, 20WH
- 120V compact: (CF) compact fluorescent: 2 x 13W

### ORDERING INFORMATION

Series	Operation	Class	Div.	Groups	Light/EXIT	#of Lamps	Mounting	Options
HDZ-RMT(remote version)	6 (volt DC)	C1 (i)	D1 (i)	B	L1 (single head)	1 (single lamp)	CM (ceiling mount)	LED (120VAC LED exit lamp)
HDZ-E (exit version)	12 (volt DC)	C2 (ii)	D2 (ii)	C	X1 (single face exit)	2 (double lamp)	PM (pendant mount)	SW (special wording)
	24 (volt DC)				D	X2 (double face exit)	Note: see lamp guide	WM (wall mount)
	120 (volt DC)	E					GL (green lens)	
		F						
				G				

### HDZ BUILDER

Series	Operation	Class	Div.	Groups	Light/EXIT	#of Lamps	Mounting	Options	Options

EXAMPLE: HDZ-RMT12-C1-D2-CD-L1-2-WM

DESCRIPTION: HDZ hazardous area remote fixture, rated for class1 division 2, groups C&D, single head, double lamp, 12V, 12WH wall mount

EXAMPLE: HDZ-E-120-C1-D2CD-X1-1

DESCRIPTION: HDZ Hazardous area exit sign, rated for class1 and division2, groups C&D, single face, ceiling mount, complete with one 120V incandescent lamp.

<b>JOB:</b>	<b>TYPE:</b>
-------------	--------------

**MECHANICAL SPECIFICATIONS**

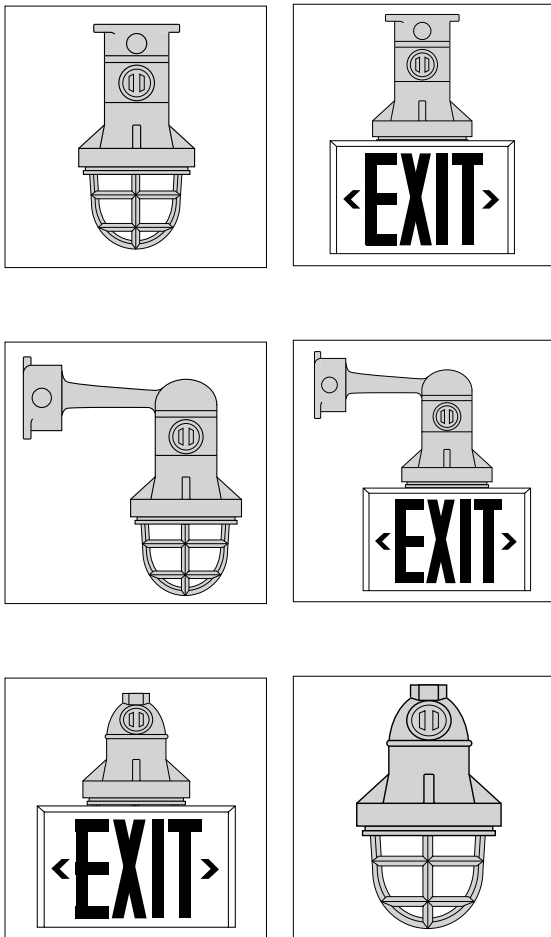
The HDZ Series housing is constructed from corrosion resistant, heavy duty cast aluminum. Exit sign face plates and frame are constructed from durable 20 gauge steel, standard with a white baked powder coat finish. Fixture mounting can be specified as either ceiling mount, wall mount or pendant mount. All lamp wiring is supplied pre-pulled, sealed and ready for input circuit connection. Exact dimensions and mounting arrangements will vary depending on the mounting configuration.

**LAMP HEAD / FIXTURE FEATURES**

The HDZ series offer a variety of lamp and fixture combinations. Each emergency lighting head can be configured with one or two fully adjustable lamp and reflector assemblies contained within the globe enclosure. Supported DC voltages of 6VDC, 12VDC or 24VDC utilize a wedge or bi-pin based incandescent lamp. 120VAC utilize a medium base lamp. Exit sign faceplate(s) and frame are constructed from durable 20 gauge steel, standard with a white baked powder coat finish. Custom exit colors and signage/graphics are also available.

**INSTALLATION**

The HDZ series of emergency lighting and exit fixtures are suitable for surface wall, surface ceiling and pendant mounting as specified. Suitable for various Class, Division and Group ratings as specified



**WARRANTY**

The HDZ Series comes with a 5-year factory warranty. Lamps are not covered under the warranty. Deliberate damage, misuse, improper installation effectively cancel the warranty.