



PRODUCT OVERVIEW

The LUNA series offers the ultimate in Italian design and technology. Legendary durability, reliability and performance best describe the LUNA. The fully gasketed housing encloses the high output metalized reflector and lamp head assemblies. Beghelli AUTOTEST diagnostics comes standard. The optional patented Path Marking System safely and effectively designates the path of egress in a smoke filled environment.

DIFFUSER

The LUNA diffuser is UV stabilized to reduce the yellowing index and provide superior light output. The co-injection process increases the strength and durability of the LUNA diffuser.

INSTALLATION

Surface ceiling or wall mounting. Suitable for wet location installations.

REFLECTOR

The LUNA reflector is made of injection molded, self-extinguishing, UV stabilized polycarbonate. Vacuum metalization results in a highly reflective surface. The reflector supports components including the lamp holder and circuit.

EXTERNAL SPECIFICATIONS

The LUNA series housing is constructed from high quality corrosion, flame and vandal resistant polycarbonate. The highly efficient lens completely encloses and protects the units lamp assemblies. Liquid silicon gasketing is "hot-bonded" to the housing during the manufacturing process, ensuring its durability and effectiveness. Vandal resistant latch clips ensure the integrity of the LUNA emergency lighting unit.

INTERNAL SPECIFICATIONS

The LUNA series uses dedicated 120V or 277V AC. Input the automatic recharge circuit is regulated by an electronic voltage sensor and the battery is protected by a low voltage cut-off circuit.

CUSTOM COLORS

The LUNA series can be ordered in optional (CC) custom color finishes.



ORDERING INFORMATION

Series	Lamps	Operation	Input Voltage	Auto-Test	Options
LA	25 (2x5w halogen)	SE (emergency)	US (120V)	AT (auto-test)	L
			US2 (277V)		CC

LUNA BUILDER

Series	Model	Options	Input Voltage	Auto-Test	Options

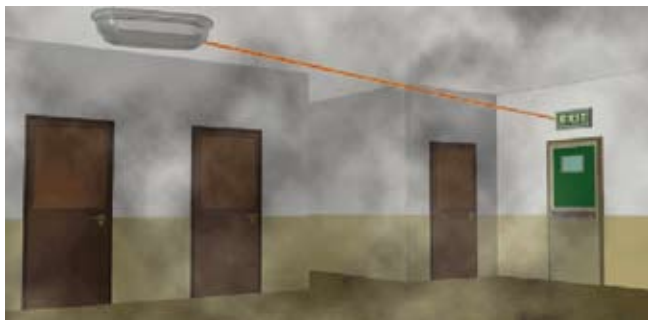
EXAMPLE: LA25-SE-US-AT

DESCRIPTION: Luna emergency luminaire, 2x5 watt halogen, 120V, auto-test

*Beghelli Auto-Test comes standard on all LUNA XLR emergency units.

JOB:	TYPE:
-------------	--------------

BATTERY & CIRCUIT TECHNOLOGY



The LUNA series specified with the optional “path marking system” offers an entirely new level of egress safety. The patented “path marking system” clearly marks the exit and the path leading to the exit in smoke filled environments. Laser technology is instantly recognizable as a path marker and is easily followed to safety. The laser can be installed on either side of the LUNA and directed towards the exit. The “path marking system” is ideal for use in environments that make use of steam, dry ice, special effects, pyrotechnics and chemicals. It is also ideal in hospitals, nursing homes, schools, universities, shopping centers, hotels, resorts and theme parks.

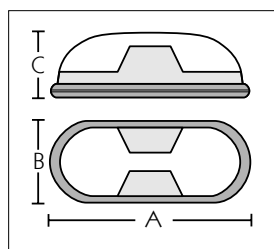
AUTO TEST DIAGNOSTIC

The LUNA series is supplied standard with a fully configured auto-test feature that continually monitors the functional operation of the unit. The lamps, battery and circuitry are continually tested to ensure proper operation. A visual display alerts of any malfunctioning component.

- Flashing Red: Emergency Inhibited / Under Change
- Red: Battery or Circuit Malfunction
- Yellow: Lamp Malfunctioning
- Flashing Yellow: Test Active
- Green: Normal Operation

Auto-test is comprised of an 8-bit microprocessor capable of integrating a large number of functions. Auto-test continually monitors the functional operation of the lamps, battery and circuitry.

DIMENSIONS (in.)



Wattage	A"	B"	C"
2x5W	17"	6 1/2"	4"

Periodic emergency duration tests are internally simulated to ensure proper operation during an actual power failure. The functionality test, which is internally simulated weekly, is used to check all functions of the lamps over a one (1) minute period. The emergency duration test, which is run every six (6) months, is used to check all functions of the lamps and battery over a period of time equal to the emergency duration required under the relevant Code or Standard. Results of the tests are displayed by the tri-color LED located on the front panel of the LUNA where it can be quickly and easily read by maintenance personnel.

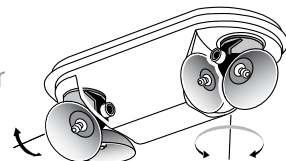
IP/WET LOCATION GASKETING

The LUNA carries an IP65 / Wet location rating. Emergency units are especially vulnerable to fire sprinkler activation since emergency lighting units are often installed right next to sprinkler heads. The IP65 / Wet location rating ensures protection not just from ambient moisture but also from jets of water like those given off by broken or activated sprinkler heads.

HIGH OUTPUT DESIGN

The LUNA incorporates an efficient and high-output lens and reflector. Vacuum metalization technology is used in the manufacturing of the reflector, resulting in a high-efficiency, mirror-like reflector. The diffusion lens has been designed to effectively transmit the greatest amount of luminaires with the least amount of transmittal loss.

Lamp assemblies can be rotated, aimed and locked on two (2) axis for the ultimate in adjustability, ease of use and accurate beam positioning.



BATTERY & CIRCUIT TECHNOLOGY

The LUNA series emergency unit uses an internal 6 volt 5Ah sealed lead acid battery that provides a minimum 90 minutes emergency duration. The automatic recharge circuit is regulated by an electronic volt sensor and the battery is protected by a low-voltage cut-off circuit. An input voltage of 120V or 277V must be selected when ordering from the factory.

The LUNA Series comes with a 5-year factory warranty. Lamps are not covered under the warranty. Deliberate damage, misuse, improper installation effectively cancel the warranty.

WARRANTY

The LUNA Series comes with a 5-year factory warranty. Lamps are not covered under the warranty. Deliberate damage, misuse, improper installation effectively cancel the warranty.